

About ISSR

It is a public institution (based in Sulaimani city-Iraq) affiliated to the Ministry of Higher Education of the Kurdistan Region of Iraq (KRI).

Vision

Becoming a reliable Centre of Excellence for strategic studies to address national and global challenges.

Mission

- 1- Delivering cutting-edge research and strategic studies to find knowledge-based solutions to local, national, and global challenges and needs.
- 2- Fostering interdisciplinary research to tackle complex problems and drive innovation.
- 3- Producing reliable data and knowledge that can inform decision-making and empower communities, especially marginalized and underserved communities.
- 4- Building extensive networks and research collaborations, locally and internationally.
- 5- Developing high-quality research capacity building and consultation.

Field and Application

This microscope generally used to diagnostics of cells and tissues.

1. Biological Sciences: used to examining cellular structures, tissues, and microorganisms.
2. Medical and Clinical: Commonly used in pathology, histology, and hematology for examining blood smears, tissue biopsies.
3. Industrial Applications: Used for quality control in materials science, metallurgy, and electronics.
4. Environmental Science: in analyzing water samples, soil microorganisms, and pollutants..



Euromex iScope series Microscope

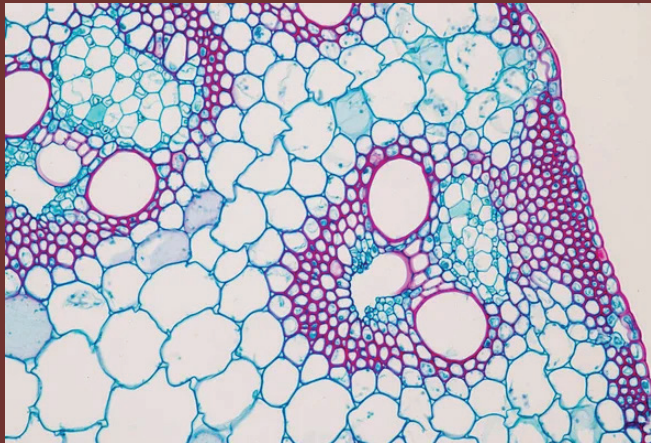
Description

The Euromex iScope is a high-quality optical microscope designed for professional and educational use. It is widely used in laboratories, research institutions, and schools due to its robust design, precision optics, and versatility.

The Euromex iScope is a highly adaptable tool, making it an excellent choice across a wide array of professional, educational, and industrial settings.

Explanation of Result

The microscope is intended to be used with transmitted/ reflected illumination and with the specimen fixed on a slide and show the clean image of the samples.



Result Explanation

This is a microscopic view of plant tissue showing different types of cells. The image highlights vascular bundles, including xylem and phloem, surrounded by parenchyma cells, which are involved in nutrient storage and support.

Sample Type

Euromex iScope to observation and diagnostics such as humans (blood, bone, hair, tissue, cells,), plants (leaves, seeds, roots, flowers and reproductive tissue), and microorganisms (bacteria, virus, fungi), and environmental (soil).

Contact Person

Sonia Sardar Talb

Master/ food sceince

sonia.talb@kissr.edu.iq

00964 7705031015

Microbiology Department, Kurdistan Institution
for Strategic Studies and Scientific Research
(KISSR), Sulaymaniyah/Iraq